

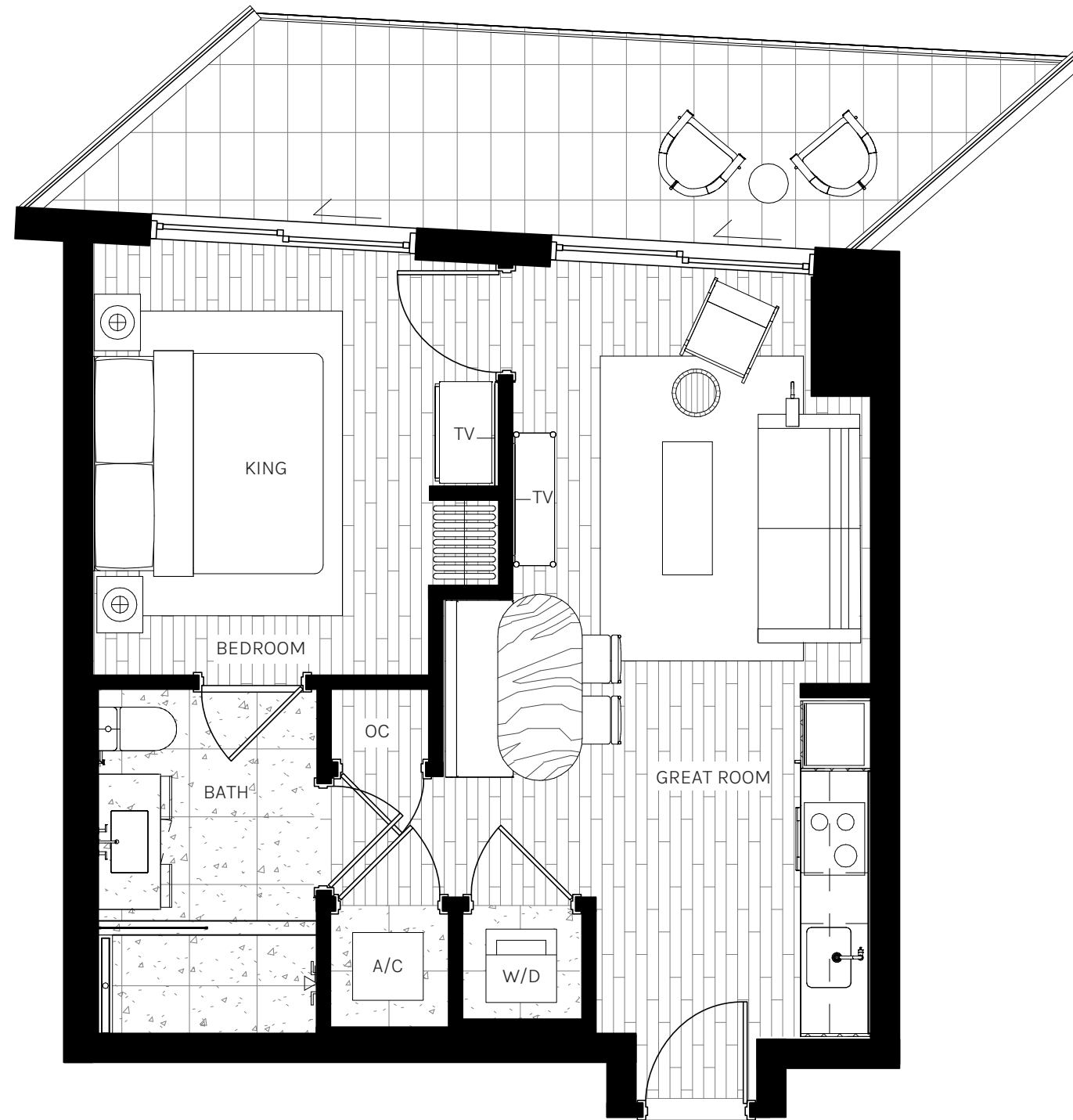
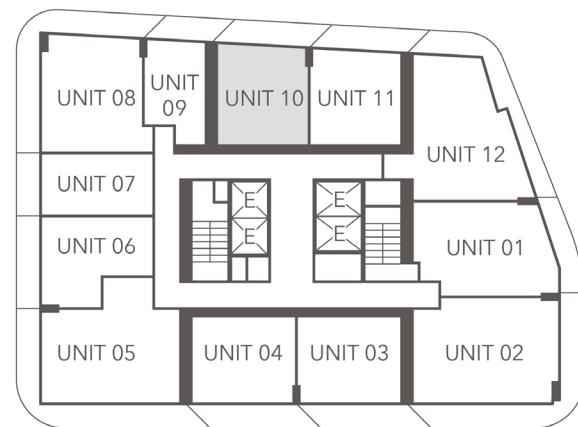
UNIT 10

1 BEDROOM
1 BATHROOM

INTERIOR
650 SQ. FT. | 60 M²

EXTERIOR
153 SQ. FT. | 14 M²

TOTAL
803 SQ. FT. | 75 M²



ORAL REPRESENTATIONS CANNOT BE RELIED UPON AS CORRECTLY STATING THE REPRESENTATIONS OF THE DEVELOPER. FOR CORRECT REPRESENTATIONS, MAKE REFERENCE TO THIS BROCHURE AND TO THE DOCUMENTS REQUIRED BY SECTION 718.503, FLORIDA STATUTES, TO BE FURNISHED BY A DEVELOPER TO A BUYER OR LESSEE.

These materials are not intended to be an offer to sell, or solicitation to buy a unit in the condominium. Such an offering shall only be made pursuant to the prospectus (offering circular) for the condominium and no statements should be relied upon unless made in the prospectus or in the applicable purchase agreement. In no event shall any solicitation, offer or sale of a unit in the condominium be made in, or to residents of, any state or country in which such activity would be unlawful. All prices, plans, specifications, features, amenities and other descriptions are preliminary and are subject to change without notice in the manner provided in the offering documents. The Developer makes no guarantee that certain amenities, services or features will be offered. The Developer intends to seek approvals for a marina, but there is no guarantee that that marina will exist or that purchasers will be entitled to utilize the services provided at the Marina. Ceiling heights may vary and no guarantee of a view is made. Certain business such as restaurants, lounges and bars are conceptual only and may change or be eliminated. Consult your prospectus regarding the square footage of the units as the method of measurement used herein may result in square footages which are larger than the method of measurement used in the condominium documents. See the condominium documents for the leasing restrictions. The estimated completion date is subject to change. This condominium is being developed by Loftly Brickell Sales LLC, a Florida Limited Liability Company ("Developer"), which has a limited right to use the trademarked names and logos of Newgard pursuant to a license and marketing agreement with Newgard. Any and all statements, disclosures and/or representations shall be deemed made by Developer and not by Newgard and you agree to look solely to Developer (and not to Newgard and/or any of its affiliates) with respect to any and all matters relating to the marketing and/or development of the Condominium and with respect to the sales of units in the Condominium.

Legal entity Loftly Brickell Sales LLC, a Florida Limited Liability Company

Newgard

ARQUITECTONICA



CERVERA®
REAL ESTATE + 1985